



What is Trackpro?

TrackPro is a satellite control service for vehicles

- **Position:** allows to verify in real time on a map the position of all the vehicles of your fleet
- **Route:** checks routes and stops, hours of driving, time for deliveries and interventions
- **Alarms:** real time alarms in case of unexpected stops or movements, doors opening, loading and unloading of vehicles
- **Security:** remote control of the ignition system and starting lock, fuel level check, , temperatures monitoring, driver identification,
- **Communication:** instant communication with the driver, order sending to the terminal onboard
- **Web:** access to maps, console and reports, from multiple sites and multiple users with different access level
- **Reports:** allows to collect data about use of vehicles and present them in form of reports



If you want to...

- be aware of the location of your vehicles and keep a track about the routes of your fleet, then optimize the planning of the routes
- define route borders ("Geozones") and be alerted by sms o e-mail in case of the crossing of them
- have a permanent and inexpensive communication with your drivers
- monitor actual speed to avoid fines, fuel consumption to have complete control of the refueling, total work time
- check if someone is stealing fuel from your vehicles
- check if the driver has been or not to a specific place
- avoid any trouble regarding the thefts of carried goods
- have a clear and precise vision of the safety of your drivers and vehicles
- gather statistics about the use of your fleet vehicles

... then pay attention to our proposal.

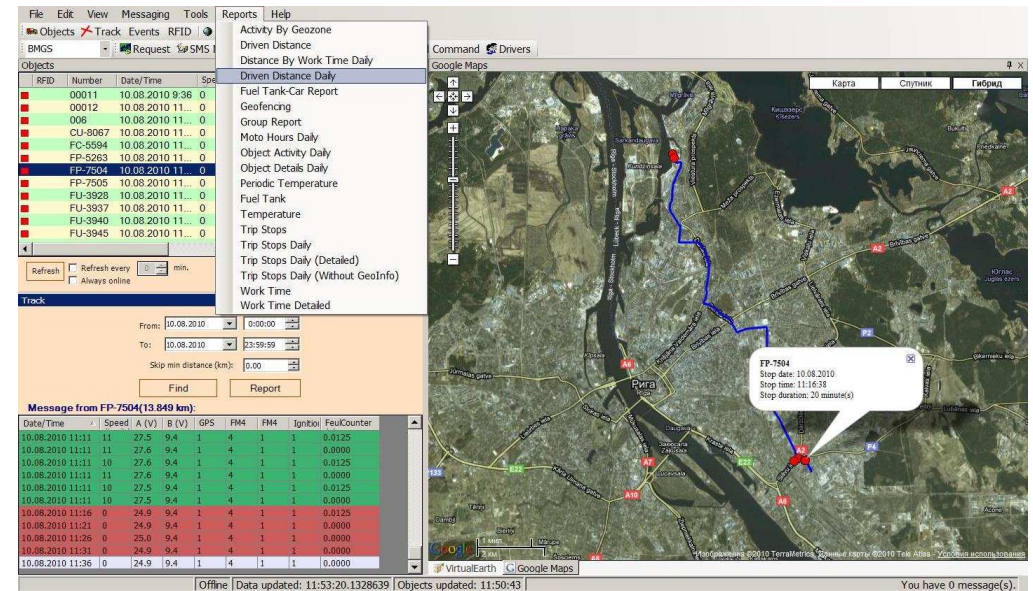
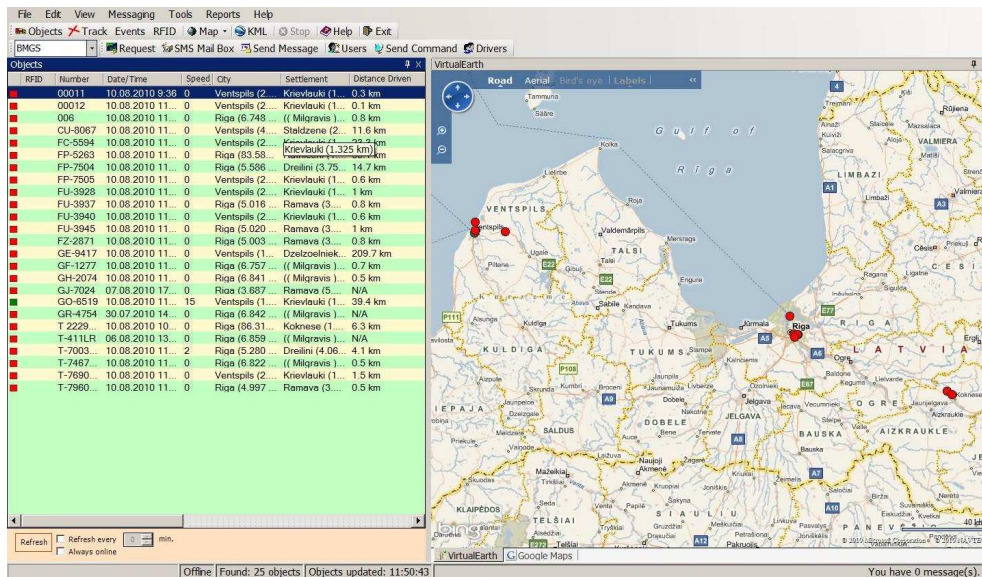


Trackpro service can be used by a web console that allows to monitor all the fleet. Multiple accounts for different offices, sites and level access can be defined. You can control your fleet simply using a computer connected to the internet, without installing any software, or using an internet-enabled smartphone or mobile device.

TrackPro features

- Automation of fleet management, with capability to manage accounts associated with the organization of transport
- Automatic history of the use of a vehicle for the entire period of operation (Event Log)
- Implementation of security functions (rapid response, remote locking of the engine, an alarm button, etc.)
- Instantly create reports on mileage, route, motion graphics, vehicle speed, fuel, gas stations, downtime, etc.
- Creation of any other reports are available on request with any conditions and data
- Communication with the driver

>>> Supervision map about the fleet



>>> Customisation possibility for maps and alert

- Use 2 or more channels of communication, providing high reliability
- Connection of any additional sensors (open / close door, fuel level, temperature in refrigerators, cargo weight, etc.)
- Routing control and execution of waybill
- Integration with enterprise information systems (accounting, logistics, dispatch, etc.)
- Development of any individual solutions for customers, both software and technical

Definition of a “geozone” in details

Zone

Enable	Name	Type	Margin	Group	Comment
<input checked="" type="checkbox"/>	Бетонный з...	Polygon	0.1		
<input checked="" type="checkbox"/>	Бетонный з...	Polygon	0.1		
<input checked="" type="checkbox"/>	test mashin G...	Polygon	0.1		

Offline | Data updated: 11:58:12.0770689 | Objects updated: 11:50:43 | You have 0 message(s).

Gathered data are always available for checking and sorting, depending on the needs

Objects

Number	Date/Time	Speed	City	Settlement	Distance Driven	Comment	A (V)	B (V)	GPS	FM4	FM4	FuelCo	Ignitor	FuelCo	Can	CAN	Fuel	Can	CAN	Can
00011	10.08.2010 9:36	0	Ventspils (2...	Krievlauki (1...	0.3 km	KATO ...	0.0	8.5	1	4	1	0.0...	-	-	-	-	-	-	-	-
00012	10.08.2010 11...	0	Ventspils (2...	Krievlauki (1...	0.1 km	KATO ...	24.9	9.7	1	3	1	0.0...	-	-	-	-	-	-	-	-
006	10.08.2010 11...	0	Riga (6.748...	((Milgravis)...	0.8 km	Liebherr...	23.3	9.2	1	3	1	0.0...	-	-	-	-	-	-	-	-
CU-8067	10.08.2010 11...	0	Ventspils (4...	Staldzene (2...	11.6 km	Pump	28.4	9.3	1	3	1	0.0...	-	-	-	-	-	-	-	-
FC-5594	10.08.2010 11...	0	Ventspils (2...	Krievlauki (1...	23.3 km	Mixer M...	26.5	9.4	1	2	1	-	-	-	0	475...	89	555	N/A	928...
FP-5263	10.08.2010 11...	0	Riga (83.58...	Ratnicensi (1...	65.1 km	Bus VW...	12.8	9.8	1	1	1	-	-	0	0.000...	-	-	-	-	-
FP-7504	10.08.2010 11...	0	Riga (5.588...	Dreilini (3.75...	14.7 km	Truck ...	24.9	9.4	1	4	1	-	-	1	0.0...	-	-	-	-	-
FP-7505	10.08.2010 11...	0	Ventspils (2...	Krievlauki (1...	0.6 km	Truck ...	24.9	10.3	1	1	1	-	-	0	0.0...	-	-	-	-	-
FU-3928	10.08.2010 11...	0	Ventspils (2...	Krievlauki (1...	1 km	Mixer M...	25.9	9.9	1	1	1	-	-	-	N/A	507...	76	N/A	4827	681...
FU-3937	10.08.2010 11...	0	Riga (5.016...	Ramava (3...	0.8 km	Mixer M...	25.6	10.6	1	4	1	-	-	-	N/A	545...	98	N/A	5035	756...
FU-3940	10.08.2010 11...	0	Ventspils (2...	Krievlauki (1...	0.6 km	Mixer M...	25.5	9.4	1	3	1	-	-	-	N/A	309...	59	N/A	4508	640...
FU-3945	10.08.2010 11...	0	Riga (5.020...	Ramava (3...	1 km	Mixer M...	25.7	9.7	1	5	1	-	-	-	N/A	593...	98	N/A	5828	773...
FZ-2671	10.08.2010 11...	0	Riga (5.003...	Ramava (3...	0.8 km	Pump	25.5	9.8	1	4	1	-	-	-	N/A	618...	71	N/A	5921	458...
GE-9417	10.08.2010 11...	0	Ventspils (1...	Dzelzdziniek...	209.7 km	Truck ...	28.2	9.3	1	2	1	-	-	-	1	146...	78	594	8424	291...
GH-1277	10.08.2010 11...	0	Riga (6.757...	((Milgravis)...	0.7 km	Tanker ...	25.8	9.5	1	4	1	-	-	-	N/A	258...	53	N/A	3801	463...
GT-2074	10.08.2010 11...	0	Riga (6.841...	((Milgravis)...	0.5 km	Truck ...	24.8	9.3	1	3	1	-	-	-	N/A	174...	85	N/A	1177	288...
GJ-7024	07.08.2010 17...	0	Riga (3.687...	Ramava (5...	N/A	Bus VW...	8.1	7.8	1	4	1	0.000...	-	-	-	-	-	-	-	-
GO-6519	10.08.2010 11...	15	Ventspils (1...	Krievlauki (1...	39.4 km	Bus VW...	14.1	10.4	1	2	1	-	-	-	1	0.000...	-	-	-	-
GR-4754	30.07.2010 14...	0	Riga (6.842...	((Milgravis)...	N/A	Tipper ...	26.3	10.0	1	4	1	-	-	-	0	551...	46	0	4655	994...
T-2229...	10.08.2010 10...	0	Riga (86.31...	Koknese (1...	6.3 km	Manitou...	13.2	15.0	1	1	1	-	-	-	0.2...	-	-	-	-	-
T-411LR	06.08.2010 13...	0	Riga (6.859...	((Milgravis)...	N/A	Manitou...	13.2	10.4	1	4	1	3.0...	-	-	-	-	-	-	-	-
T-7005...	10.08.2010 11...	2	Riga (5.280...	Dreilini (4.06...	4.1 km	CASE S...	26.6	9.6	1	5	1	0.0...	-	-	-	-	-	-	-	-
T-7467...	10.08.2010 11...	0	Riga (6.822...	((Milgravis)...	0.5 km	Manitou...	11.6	9.3	1	4	1	-	-	0	0.000...	-	-	-	-	-
T-7890...	10.08.2010 11...	0	Ventspils (2...	Krievlauki (1...	1.5 km	CASE S...	25.7	9.2	1	2	1	-	-	1	0.0	0	0	0	2489	0
T-7960...	10.08.2010 11...	0	Riga (4.997...	Ramava (3...	0.5 km	Liebherr...	24.9	9.8	1	5	1	-	-	-	0.0...	-	-	-	-	-

Offline | Data updated: 11:58:12.0770689 | Objects updated: 11:50:43 | You have 0 message(s).

Wide choice regarding reports customization

10.08.2010
Driven Distance Daily 02.08.2010 00:00 - 10.08.2010 23:59:59

Number: FP-7504 Comment: Truck MB 2643

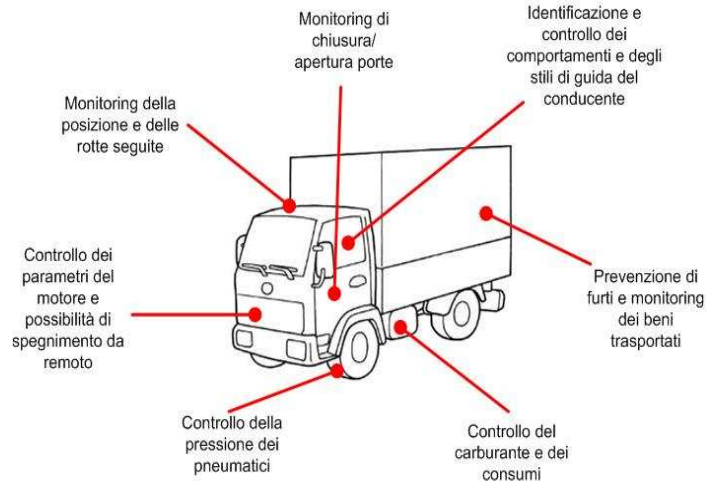
Day	Fuel Used (l)	Fuel Rate (L/100 km)	Distance (km)
02.08.2010	22.7	48.6	46.7
03.08.2010	12.0	45.8	26.1
04.08.2010	98.1	40.5	242.3
05.08.2010	103.0	38.1	270.5
06.08.2010	22.0	47.6	46.1
07.08.2010	0.0	0.0	1.2
08.08.2010	0.0	0.0	1.3
09.08.2010	32.5	45.2	71.9
10.08.2010	7.7	52.7	14.7
Total per object	297.9	Avrg. 41.3	720.6
Total	297.9	Avrg. 41.3	720.6

Current Page No.: 1 | Total Page No.: 1 | Zoom Factor: 100%

TrackProBenefits

1. Reducing of mileage and downtime of your vehicles
2. Reducing the number of empty runs and operating costs
 - Reducing fuel costs, also preventing theft of fuel;
 - Increasing lifetime of vehicle.
3. Prevention of non-productive losses
 - directly caused by the driver (unauthorized stops, misuse of vehicle, etc.);
 - from accidents caused by driver;
 - due to downtime for loading and unloading points and terminals from the arrival at the wrong time;
 - losses from downtime due to delayed care for breakdowns and accidents;
 - from damage to cargo caused by accidents or improper operating conditions;
 - losses from theft of cargo and vehicle.
4. Increasing investment attractiveness (value) of business

How does the TrackPro works



1. an autonomous electronic device is initially installed on the vehicle; it determines the coordinates, speed, and check the status of sensors and connected digital devices;
2. informations are processed and transmitted via one or more communication channels to the server of our company;
3. these informationz can be checked by the Customer at any time on an electronic console and map through the software installed on a computer and is able to automatically generated reports;
4. the customer sees on the display a full status of all vehicles online. He can define the path, the schedule for vehicles and the sequence of prohibited activities and mandatory for the object path. All information received will be recorded in the company database and can be viewed in the form of reports.

Transport Companies



A transport activity doesn't only take care of goods delivering, it must also be as quick as possible, and work under conditions of maximum security. Behind the delivery of goods there is an entire system that has to be well coordinated at any time, and doing this without a control system is an hard task.

Here follows a few points that will describe why using TrackPro could help.

1. **Route control:** having the chance to control real time the routes and the position of every driver guarantees many advantages. The optimization of the driven paths, making the most of all the company's resources (no more empty truck trips) and having the complete control about the fleet movement (crossing or leaving forbidden zones or doing not authorized paths).
2. **Fuel Control:** most of the costs linked to transport are due to excessive fuel consumption. Thanks to the sensors connected directly to each of your vehicles it will be possible fully understand how much this factor affects your company economy: knowing which of your drivers drive too fast, checking if there are some problems at the fuel tank and knowing if all of the fuel you pay for is actually putted in the vehicle and not stolen instead. In addition, reports can be generated, to have an even deeper image of the global fuel consumption.
3. **Shipping abroad:** when going abroad the chances for your drivers of taking the wrong path, or getting lost always increase. Once again knowing all information about your vehicles will be the best way to control your business. In addition our device is capable to use different profiles according to mobile operator which is in use, reducing the cost of communication if the roaming conditions are not good enough.
4. **Loading conditions:** the shipment of perishable goods requires more attention because they have to be kept at constant temperature. Thanks to the TrackPro device it is possible to monitor the critical points of your cargo, receiving alarms is the security threshold are broken and guaranteeing to you, and your customer, the correct delivery.
5. **Direct communication with the driver:** the driver of a vehicle on it's installed our device can talk to the control center at any time you want, and receive calls when necessary, through a simple microphone.



Security Companies



Security companies must prove to be reliable, punctual and timely when an emergency call is received. The speed of reaction is a basic requirement for this job. TrackPro gives you all the functions you may need to succeed in this task. To get all these guarantees, we suggest some key points to keep in consideration:

1. **Vehicle Tracking:** Check the status and the locations of all your vehicles through our tracking service. This provides logistical guarantees both for the control of your employees and in case of disputes with your customers. If there are complaint regarding delays or lack of support, you will always have a history of all the movements of your fleet, to prove if your employees did the right thing or not.
2. **Coordination:** In case of emergency, knowing the exact location of all your vehicles will allow you to minimize the times of response, ensuring the maximum efficiency everytime.
3. **Improved Security:** It is possible to implement different security mechanisms for your personnel. From the SOS switch, button that once pushed activates the alarms for the control console, to temporized mechanisms capable to send warning signals if the driver remain too far from the vehicle for too long time. The versatility of TrackPro makes it a very powerful device, capable to offer tailormade solutions for every need.
4. **History:** keep an archive of all the routes your cars made. At every time it will be possible to check if mistakes have been made following the intervention procedures.



Taxi Companies



Taxis - a service for which more than any other rule applies: time is money. The service requests can come from different points of the city, and the taxis can be in different positions everytime. Consider how much it will be possible to improve this through a monitoring system.

1. Accelerate the process of ordering and reduction of the deposit of the car
2. Better coordination of movements of the fleet of the city
3. More efficient use of vehicles
4. Timely communication with the driver in case of violations
5. Research the best route to your destination
6. Increased likelihood of finding stolen vehicles
7. Support for the driver in case of theft, accident, or extraordinary situations.



is a service provided by



Engineering & networking solutions

Tomware scarl

Via Cesarea 103 - 48124 Ravenna
Tel. +39.054467000 - Fax +39.0544408300
info@tomware.it - www.trackpro.it